



HYMAX[®]2

FLANGE ADAPTOR AND FLANGE ADAPTOR LONG BODY (2" - 12")

DO NOT DISASSEMBLE THE COUPLING. DO NOT LUBRICATE THE BOLTS. DO NOT TEAR THE GASKET - SEE INSTRUCTIONS.

GENERAL INSTRUCTIONS:

THE HYMAX2 FLANGE ADAPTOR IS A STAB TYPE PRODUCT.

NOTE: TIGHTEN BOLTS TO THE TORQUE VALUE PROVIDED ON THE PRODUCT LABEL IN ONE SINGLE STEP. KRAUSZ PRODUCTS DO NOT REQUIRE A GRADUAL INCREASE OF TORQUE OVER A SPECIFIED PERIOD OF TIME, NOR DO THEY REQUIRE RE-TORQUE AS STANDARD. THE MINIMAL TORQUE REQUIREMENTS HAVE TO BE ACHIEVED PRIOR TO ANY RECHARGING OF THE LINE. BOLTS CAN BE OVER-TIGHTENED BY UP TO 50% OVER TORQUE VALUE, IF NEEDED.

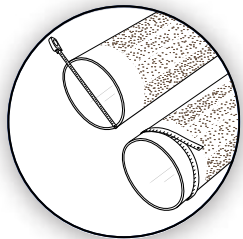
STEP 1



Prepare the pipe end. Clean and de-scale pipe end. Remove any debris or build up on the pipe end and clean the outer pipe surface with soapy water. Clean pipe end to a distance that is equal to the length of the center ring. Make sure there is no corrosion on the outer pipe end that could affect the gasket seal. Again, clean pipe end with water.

NOTE: Except steel, PVC, and PE pipes, all rough-surfaced pipes must be lubricated with a water-based gasket lubricant in order to achieve a proper seal.

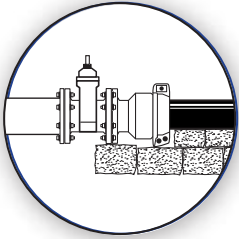
STEP 2



Measure the pipe's outer diameter and make sure the adaptor's size will fit properly.

NOTE: Each product's size range is shown on the product's label. Assure pipe is not out of round, free of scratches, dents, flats or other defects which may interfere with the coupling's proper seal. The HYMAX2 Flange Adaptor may not fit well or function properly on pipe which is not round or damaged.

STEP 3



Unpack the HYMAX2 Flange Adaptor. Carefully remove it from the packaging. Inspect the HYMAX2 Flange Adaptor for shipping damage and verify that there are no missing parts.

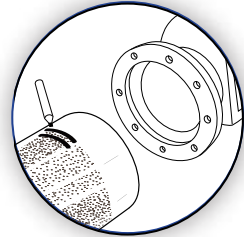
NOTE: Hymax2 Flange Adaptor is a stab-on type coupling. Do not loosen the bolts on the end rings.

NOTE: Bolts are pre-lubricated with a dry coating. Do not field lubricate bolts/nuts. Greasing or field lubricating bolts/nuts voids warranty.

Make sure that the pipe is properly supported.

NOTE: The HYMAX2 Flange Adaptor is not designed to carry the weight of the pipe by itself.

STEP 4



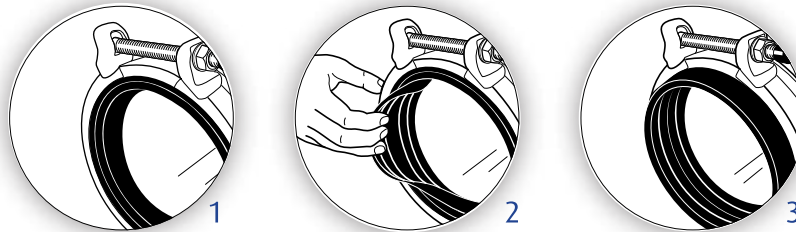
Make 2 markings on the pipe - one for the closed position of the gasket and one for the open (flip) position. The mark for minimum stab depth which is closer to the product is at a distance of 2.25" from the edge, the mark further away at 3.25", which is for the open gasket position.

STEP 5

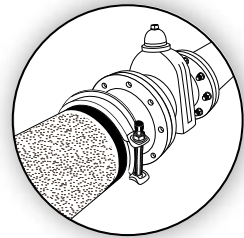
NOTE: Measure the OD of the pipe TWICE using an OD tape! Once the inner gasket is removed it can NOT be re-installed!

The coupling's gasket system has two positions - A closed gasket position and an open gasket position. The open position is used to accommodate larger OD pipes within the working range. If a larger OD pipe is used, hold the gasket with your fingers and unfold it to an open position. Look for the working range on the product label to determine if the product range is within the higher or the lower range.

NOTE: Do not tear the gasket.

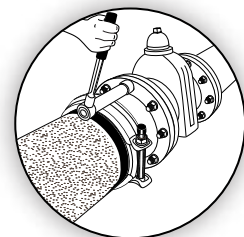


STEP 6



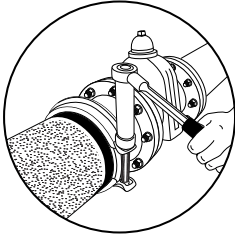
Position the HYMAX2 Flange Adaptor. Once the gasket is properly sized, position the HYMAX2 Flange Adaptor over the pipe end covering the marks on the pipe (step 4). For uncoated ductile iron, grey cast iron and asbestos cement pipe surfaces, appropriate gasket lubricant is required on both the inside surface of the gasket and the outer pipe surfaces.

STEP 7



Assemble the flange joint using flange bolts. Make sure you use a flat gasket between the flanges (not provided).

STEP 8



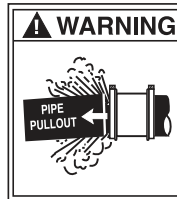
Tightening the end rings. Tighten the Flange Adaptor's bolts using a 3/4" socket wrench for 2"-3" couplings, a 7/8" socket wrench for 4"-12" couplings. When you finish, re-check the torque again.

DO NOT LUBRICATE BOLTS!

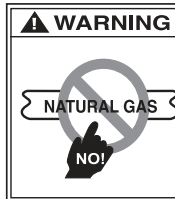
NOTE: Use of a torque wrench is required! The torque wrench will verify that the proper torque has been achieved. Refer to the product label for the proper torque settings.

STEP 9

Recharge the line and check for leaks. If any leakage across the seal end is evident, reduce the pressure in the line and increase the labeled torque of the end ring bolt/s by up to 50%.



WARNING This product does not restrain axial pipe movement. Proper anchorage of the pipe is required if this product is used as a coupling. Failure to anchor the pipe ends could result in the escape of line content, and may cause property damage, serious injury or death.



WARNING **Caution:** This product is not intended for use on natural gas piping, or any other type of gas piping. To do so could result in escaping gas that could ignite and cause property damage, serious injury or death.

HYMAX[®]

Repair the past. Connect the future.

 **KRAUSZ** is the creator of HYMAX

331 SW 57TH AVENUE, OCALA, FLORIDA 34474

TEL: 855-457-2879 | 855-4KRAUSZ

FAX: 352-304-5787

info@krauszusa.com | www.krauszusa.com

Hymax[®] is a registered trademark of Krausz Industries Ltd. Copyright © 2018 Krausz Industries Ltd., All rights reserved.
This product is protected under a registered patent. See Krausz USA website for details.
