

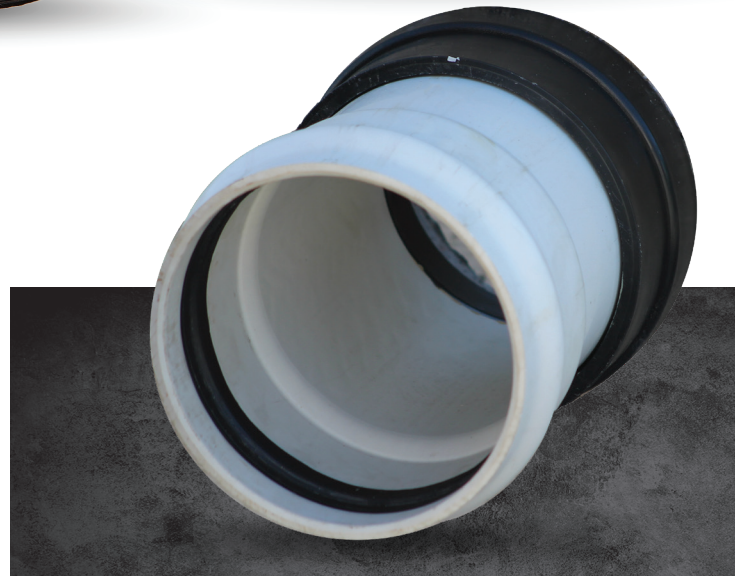


# EZ-Bell™ Adapter

For Lateral connections of Concrete Pipe, Manhole and Catch Basin to PVC Sewer Pipe.



A flexible watertight connection using rubber gaskets with proven reliability throughout the industry, the EZ-Bell™ Adapter offers a simple cost effective solution that is easy to install. The body of the EZ-Bell™ is made from polyethylene which offers a small amount of flexibility therefore eliminating problems with shear stresses that can cause leaks.



*Example of EZ-Bell™ Adapter connecting PVC with concrete.*

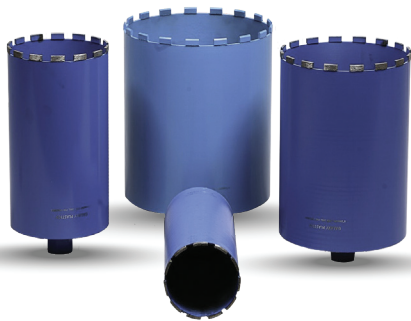
# EZ-Bell™ Adapter Coupling

The perfect solution when adapting concrete pipe, manhole (in sizes 18" and above) and catch basin to PVC sewer pipe.

## Easy Installation

1. Core hole to specified size (see chart).
2. Insert spigot into cored hole and push until fully inserted.
3. Chamfer lateral pipe, lube the chamfered-end only and push in.

ITEM CODE	INCHES	MM	HOLE DIAMETER
EZB 04	4"	100	5"
EZB 05	5"	125	6.25"
EZB 06	6"	150	7"
EZB 08	8"	200	9"
EZB 10	10"	250	11"



*Hole Saw and accessories available at Galaxy Plastics*



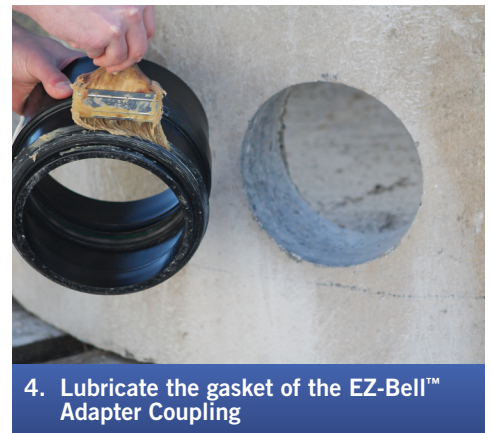
1. Mount saw jig to manhole



2. Drill/Core manhole



3. Finished hole



4. Lubricate the gasket of the EZ-Bell™ Adapter Coupling



5. Use a flat block of wood and hammer to knock and seat the EZ-Bell™ Adapter Coupling into place



6. Installed EZ-Bell™ Adapter Coupling ready for service



## WESTERN CANADA

**Galaxy Plastics Ltd.**  
#9-30321 Fraser Highway  
Abbotsford, BC V4X 1T3  
**877 808.1088** • FAX: 877 808.1288

## EASTERN CANADA

**Galaxy Plastics Ltd.**  
231 King Street  
Barrie, Ontario L4N 6B5  
**888 431.0511** • FAX: 877 269.2468

For more information on additional products and services offered by Galaxy Plastics please visit:

[galaxyplastics.com](http://galaxyplastics.com)