

SaniTite® HP
HIGH PERFORMANCE

SaniTite® HP Sewer Pipe 300 mm–750 mm



ADS Canada

SANITITE® HP SEWER PIPE 300 mm–750 mm

Certified to CSA B182.13

SaniTite HP (High Performance) couples advanced polypropylene resin technology with a proven, dual-wall profile design for superior performance and durability. This innovative new product meets or exceeds many of the industry standards for pipe stiffness and joint integrity. When specifying pipe per CSA B182.13 on your next sanitary or storm sewer project, you are specifying some of the most stringent performance requirements in the industry. These include measures for quality assurance, structural performance and design verification.

Advanced Dual Wall Profile Construction

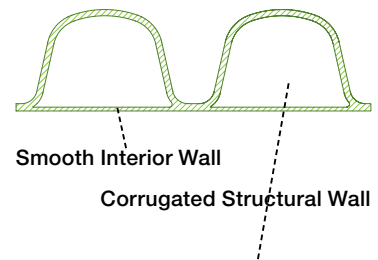
300 mm - 750 mm (12"-30") diameter SaniTite HP pipe utilizes an enhanced dual wall construction, providing increased pipe stiffness, which meets or exceeds the industry standard of 320 kPa. The additional stiffness and beam strength enhances jobsite performance in stringent line and grade requirements. The pipe profile is completed with a smooth interior which provides additional strength and excellent flow characteristics.

Superior Polypropylene Material

Made from an engineered impact modified co-polymer compound, the superior strength and material properties of polypropylene (PP) offer robust pipe stiffness, excellent handling characteristics, and long service life when compared to traditional sanitary sewer products. It is chemically resistant to hydrogen sulfide gas and sulfuric acid concentrations typical of sanitary sewers to provide superior durability and performance. The unique light grey resin color provides immediate jobsite recognition as well as improving the pipe's interior visibility during post-installation inspection.



Dual Wall Design



Polypropylene Resin



Interior View

Superior Joint Performance

SaniTite HP pipe has a patented extended, reinforced bell with a polymer composite band and dual gaskets that add an additional factor of safety within each joint.

The SaniTite HP joint performance meets or exceeds the 100 kPa (15 psi) laboratory performance standards per CSA B182.13 requirements.

In the field, each section of SaniTite HP may be tested by a low pressure air test, according to ASTM F1417. ASTM F1417 is a commonly used standard and specifies that 24.1 kPa (3.5 psi) air pressure be held for a specified length of time based upon pipe diameter and length of run.

Where an infiltration/exfiltration test is preferred, ASTM F2487 specifies a simplistic method of verifying proper joint performance.

Fittings and Repairs

Both standard and custom fittings are available for the SaniTite HP product line. A complete line of standard Nyloplast PVC molded fittings are available in the 300 mm - 750 mm (12"–30") mainline sizes. Standard branch laterals are designed to accept SDR-35 or SDR-26 pipe.

Additional fittings options are available for the SaniTite HP product line and are manufactured from pipe meeting CSA B182.13.

Diameter Range

SaniTite HP meeting CSA B182.13 is currently manufactured in the 300 mm - 750 mm (12"–30") size range and in 6 m (20') or 4 m (13') lengths. The 6 m (20') lengths aid in speed of installation and reduce the total number of joints. However, the 4 m (13') lengths are complimentary for deeper projects where trench box conditions require a shorter pipe.



Bell/Spigot Joint Connection



Spigot Insertion to Home Mark

DIAMETER	DIAMETER RANGE					
	PRODUCT #	PROFILE TYPE	LENGTH	INSIDE DIAMETER	OUTSIDE DIAMETER	TRUCKLOAD FOOTAGE
300mm (12 in.)	1230 0020 IBPP	Dual Wall	6 m (20 ft.)	307 mm (12.1 in)	368 mm (14.5 in)	731.5m (2400 ft.)
300mm (12 in.)	1230 0013 IBPP	Dual Wall	4 m (13 ft.)	307 mm (12.1 in)	368 mm (14.5 in)	665.7m (2184 ft.)
375mm (15 in.)	1530 0020 IBPP	Dual Wall	6 m (20 ft.)	378 mm (14.9 in)	447 mm (17.6 in)	487.7m (1600 ft.)
375mm (15 in.)	1530 0013 IBPP	Dual Wall	4 m (13 ft.)	378 mm (14.9 in)	447 mm (17.6 in)	435.9m (1430 ft.)
450mm (18 in.)	1830 0020 IBPP	Dual Wall	6 m (20 ft.)	457 mm (18.0 in)	538 mm (21.2 in)	341.4m (1120 ft.)
450mm (18 in.)	1830 0013 IBPP	Dual Wall	4 m (13 ft.)	457 mm (18.0 in)	538 mm (21.2 in)	301.1m (988 ft.)
525mm (21 in.)	2130 0020 IBPP	Dual Wall	6 m (20 ft.)	536 mm (21.1 in)	629 mm (24.8 in)	243.8m (800 ft.)
600mm (24 in.)	2430 0020 IBPP	Dual Wall	6 m (20 ft.)	612 mm (24.1 in)	711 mm (28.0 in)	182.9m (600 ft.)
600mm (24 in.)	2430 0013 IBPP	Dual Wall	4 m (13 ft.)	612 mm (24.1 in)	711 mm (28.0 in)	166.1m (546 ft.)
750mm (30 in.)	3030 0020 IBPP	Dual Wall	6 m (20 ft.)	765 mm (30.1 in)	902 mm (35.5 in)	109.7m (360 ft.)
750mm (30 in.)	3030 0013 IBPP	Dual Wall	4 m (13 ft.)	765 mm (30.1 in)	902 mm (35.5 in)	91.1m (299 ft.)

Tap Connections

A standard tapping product, such as Inserta Tee®, is compatible with SaniTite HP.

Repair Couplers

Testable repair couplers are also available and include stainless steel restraint bands.

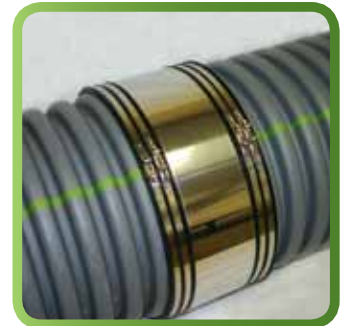
300 mm - 750 mm (12"-30") Dual Wall Structure Connections

Sanitary sewer projects require superior watertight performance combined with a flexible connection solution that can withstand the rigors of installation. To meet varying regional requirements, ADS offers a wide selection of connection options utilizing some of the most widely used manhole connectors on the market today from companies such as A-Lok, NPC and Press Seal Gasket Corporation.

When connecting dual wall corrugated SaniTite HP pipe to a manhole, a smooth exterior surface on the pipe is typically required. ADS offers three ways to adapt to these manholes connectors: a corrugated pipe adapter, polypropylene sleeve adapter, PVC Manhole Adapter or a fabricated fitting with a smooth wall cylinder welded to the exterior, available through ADS.



Typical Inserta Tee Tap



Repair Coupler

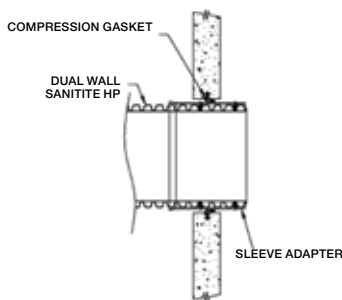


Manhole Boot Connection with Corrugated Pipe Adapter

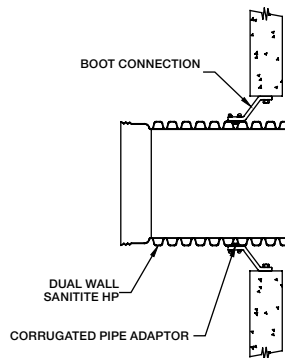


Manhole Adapter
Available in PVC or PP

Pre-Cast Compression Gasket Connection



Flexible Boot Connection



ADS SANITITE® HP 300 mm - 750 mm (12"-30") PIPE SPECIFICATION

SCOPE

This specification describes 300 to 750mm (12- through 30-inch) ADS SaniTite HP pipe for use in gravity-flow storm and sanitary sewer applications.

PIPE REQUIREMENTS

ADS 300 to 750 mm (12- through 30-inch) SaniTite HP pipe shall have a smooth interior and annular exterior corrugations.

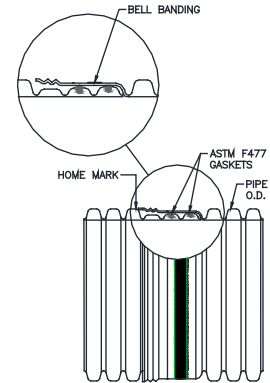
- 300 to 750 mm (12- through 30-inch) pipe shall be certified by an accredited certification body to meet CSA B182.13
- 300 to 750mm (12- through 30-inch) pipe shall have a minimum pipe stiffness of 320 kPa (46 psi) when tested in accordance with ASTM D2412.
- Manning's "n" value for use in design shall be 0.012.

JOINT PERFORMANCE

Pipe shall be joined with a gasketed integral bell & spigot joint meeting the requirements of CSA B182.13.

300 to 750 mm (12- through 30-inch) shall be watertight according to the requirements of CSA B182.13. Spigot shall have two gaskets meeting the requirements of ASTM F477. Gaskets shall be installed by the pipe manufacturer and covered with a removable, protective wrap to ensure the gaskets are free from debris. A joint lubricant available from the manufacturer shall be used on the gasket and bell during assembly.

300 to 750 mm (12- through 30-inch) diameters shall have a reinforced bell with a polymer composite band installed by the manufacturer.



(Check with a sales representative for regional product configuration.)

FITTINGS

Fittings shall conform to CSA B182.13. Bell & spigot connections shall utilize a spun-on, welded or integral bell and spigot with gaskets meeting ASTM F477. Fitting joints shall meet the watertight joint performance requirements of CSA B182.13.

FIELD PIPE AND JOINT PERFORMANCE

To assure watertightness, field performance verification may be accomplished by testing in accordance with ASTM F1417 or ASTM F2487. Appropriate safety precautions must be used when field-testing any pipe material. Contact the manufacturer for recommended leakage rates.

MATERIAL PROPERTIES

Polypropylene compound for pipe and fitting production shall be an impact modified copolymer meeting the material requirements of CSA B182.13.

INSTALLATION

Installation shall be in accordance with CSA B182.11 and ADS recommended installation guidelines, with the exception that minimum cover in traffic areas for 300 to 750mm (12"-30") diameters shall be 0.3 m (1 ft.) in single run applications. Backfill for minimum cover situations shall consist of Class I or Class II (minimum 90% SPD) material. Maximum fill heights depend on embedment material and compaction level; please refer to Technical Note 2.05C. Contact your local ADS representative or visit our website at www.ads-pipecanada.ca for a copy of the latest installation guidelines.

PIPE DIMENSIONS

Nominal Diameter mm (in.)	300 (12)	375 (15)	450 (18)	525 (21)	600 (24)	750 (30)
Pipe I.D. mm (in.)	307 (12.1)	378 (14.9)	457 (18.0)	536 (21.1)	612 (24.1)	765 (30.1)
Pipe O.D. mm (in.)	368 (14.5)	447 (17.6)	538 (21.2)	629 (24.8)	711 (28.0)	902 (35.5)

ADS "Terms and Conditions of Sale" are available on the ADS website, www.ads-pipe.com
The ADS logo, the Green Stripe and SaniTite® HP are registered trademarks of Advanced Drainage Systems, Inc.
Inserta Tee® is a registered trademark of Inserta Fittings, Co. A-Lok is a registered trademark of A-Lok Products, Inc. NPC
is a registered trademark of Trelleborg Pipe Seals Milford, Inc. Press Seal Gasket Corporation is a registered trademark of
Press Seal Gasket Corporation.
© 2017 Advanced Drainage Systems, Inc. #1241 05/17 MH



Advanced Drainage Systems, Inc.
3135 Boomer Line, Heidelberg, ON N0B 1Y0
1-800-866-4496
www.ads-pipcanada.com

