

Cambridge Brass  
P.O. Box 249  
140 Orion Place  
Cambridge, Ontario  
Canada N1R 5V1  
Tel: (519) 621-5520  
Fax: (519) 621-8674  
http://www.cambridgebrass.com

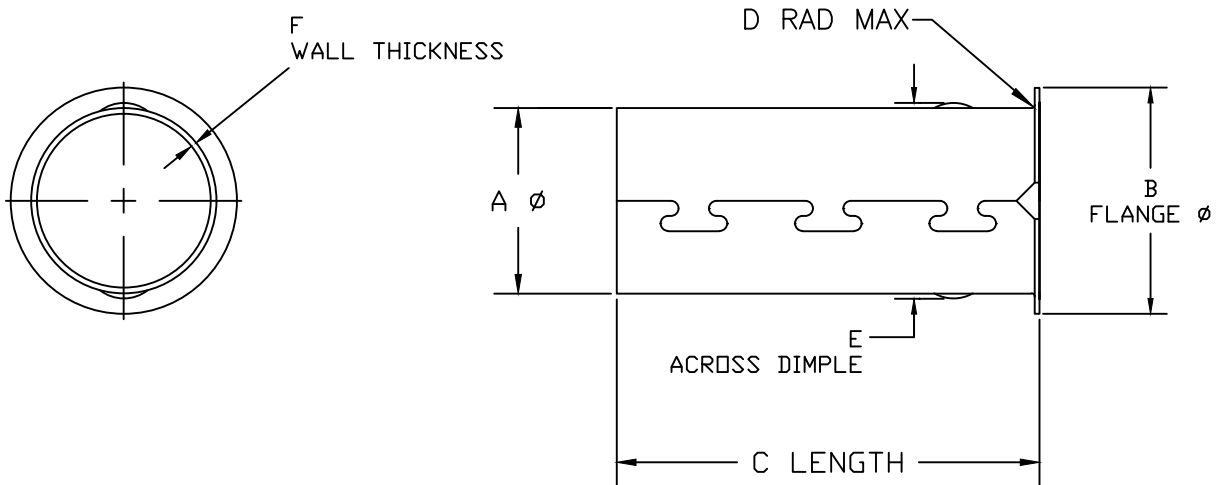


CAMBRIDGE  
(SIZE) PE SDR11  
INSERT 89-(#)

SERIES NO. 89

PE PIPE INSERT

- FOR USE WITH POLYTHEYLENE PIPE WITH IRON PIPE SIZE (IPS) OUTSIDE DIAMETER  
AND WALL THICKNESS DIMENSION RATIO OF SDR 11 PER STANDARDS ASTM D3035 OR AWWA 901



PARTS AND MATERIAL:

1. INSERT MADE OF ANSI TYPE 304 STAINLESS STEEL

FEATURES:

- FOR USE WITH SDR11 PE PIPE
- SIZE AND "SDR11" STAMPED ON THE PART
- DIMPLES AND COLLAR TO POSITION AND RETAIN WITHIN PIPE

| SIZE   | PART # | A     | B    | C    | D   | E     | F         |
|--------|--------|-------|------|------|-----|-------|-----------|
| 1 1/4" | 89-5   | 1.310 | 1.58 | 3.25 | .02 | 1.385 | .027±.002 |
| 1 1/2" | 89-6   | 1.505 | 1.82 | 3.25 | .02 | 1.585 | .027±.002 |
| 2"     | 89-7   | 1.885 | 2.30 | 3.25 | .02 | 1.970 | .027±.002 |

Cambridge Brass considers the information in this submittal form to be correct at the time of publication. Item and option availability, including specifications, are subject to change without notice.

Submitted by: